



RECP #: 752601

RECORDED 5/8/2019 AT 1:07 PM BK# 2620 PG# 1643
Debra K. Lee, CLERK OF LARAMIE COUNTY, WY PAGE 1 OF 1

STATE OF WYOMING CORNER RECORD

(In compliance with the CORNER PERPETUATION AND FILING ACT, Wyoming Statutes, 1997 Section 33-29-140, et. seq., and the Rules and Regulations of the Board of Registrations for Professional Engineers and Professional Land Surveyors)

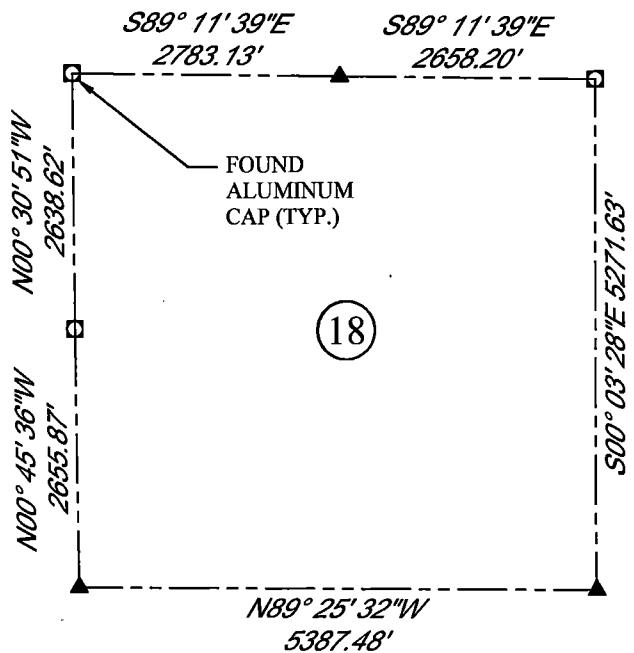
NORTH WEST CORNER SECTION 18, T. 18 N., R. 62 W., 6TH P.M., LARAMIE COUNTY, WYOMING

GLO: SET A SANDSTONE 18X12X5, 12 IN. DEEP WITH 4 MARKS ON THE SOUTH AND 2 ON THE NORTH EDGES FOR CORNER TO SECTIONS 7, 12, 13, AND 18.

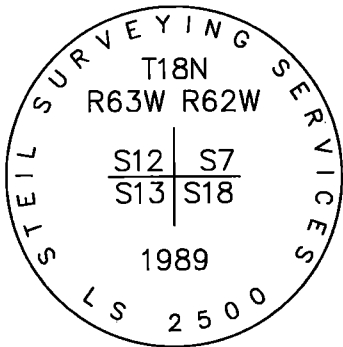
FOUND: FOUND 2" ALUMINUM CAP MARKED AS SHOWN. APPROX. 3' ON N. SIDE OF E-W FENCE LINE NEAR A GATE.



SCALE: 1" = 2000'
NORTH DETERMINED BY
G.P.S OBSERVATIONS



FOUND 2" ALUMINUM CAP
MARKED AS SHOWN



LEGEND:

- FOUND BLM CAP
- FOUND USFS CAP
- FOUND STONE
- FOUND PRIVATE MONUMENT
- ◆ CALCULATED POSITION
- ▲ SET MONUMENT (LS10245)
- SECTION LINE

DATE OF FIELD WORK: 08/02/2018 OFFICE REFERENCE: 746049 ----

CROSS INDEX DIAGRAM

1	2	3	4	5	6	7	8	9	10	11	12	13	14	15	16	17	18	19	20	21	22	23	24	25		
A																									B	
B																										C
C	6		5		4		3		2		1															D
D																										E
E																										F
F																										G
G	7		8		9		10		11		12															H
H																										I
I																										J
J																										K
K	18		17		16		15		14		13															L
L																										M
M																										N
N																										O
O																										P
P	19		20		21		22		23		24															Q
Q																										R
R																										S
S																										T
T	30		29		28		27		26		25															U
U																										V
V																										W
W																										X
X	31		32		33		34		35		36															Y
Y																										Z
Z	1	2	3	4	5	6	7	8	9	10	11	12	13	14	15	16	17	18	19	20	21	22	23	24	25	

WOOD
2615 AVIATION DRIVE
SHERIDAN, WY 82801
PH: 307-675-6400

wood.

THIS CORNER RECORD WAS
PREPARED BY ME OR UNDER
MY DIRECTION AND
SUPERVISION,
SEAL AND SIGNATURE

